



New Gauges Available!



Providing Guidance for Regional Anesthesia.



1

attach bracket

Attach custom reusable non-sterile bracket to transducer by aligning locating features.



2

cover up

CIVCO makes it easy to reduce infection rates and cross-contamination with a telescopically-folded CIV-Flex™ cover. Expand your sterile field to 58" by covering the transducer and cord with the sterile latex-free cover.

safe. efficient. gu

Five steps for clinical confidence

4

attach guide

Use proper sterile technique to hook needle guide onto bracket and snap in place with a single click.

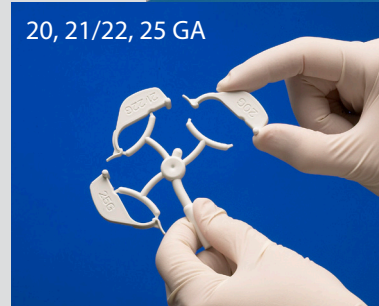
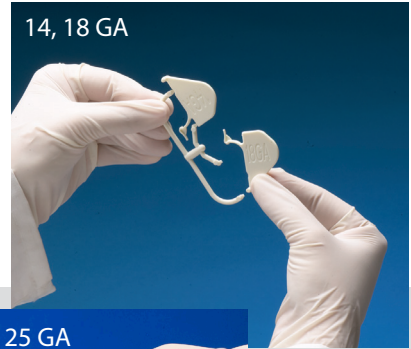




3

gauge selection

Infiniti™ offers a variety of gauge sizes for applications including catheter placement and regional anesthesia. Current gauge sizes include 14, 18, 20, 21/22 and 25.



Guiding patient care.

in ultrasound-guided regional anesthesia.



5

needle release

A unique open channel design allows users an efficient needle release for viewing anatomy in both the short and long axis.

Providing Guidance for Regional Anesthesia.



Ref. #	Product Description	Qty.
Needle Guide Replacement Kits		
610-1073	Sterile Infiniti needle guide-20, 21/22, 25GA	24
610-1074	Sterile Infiniti needle guide-20, 21/22, 25GA with 14 x 91.5cm (5.5" x 36") CIV-Flex cover (3D)	24
610-1075	Sterile Infiniti needle guide-20, 21/22, 25GA with 14 x 147cm (5.5" x 58") CIV-Flex cover (3D)	24
610-1094	Sterile Infiniti needle guide - 14, 18ga	24
610-1095	Sterile Infiniti needle guide - 14, 18ga with 14 x 91.5cm (5.5" x 36") CIV-Flex cover (3D)	24
610-889	Sterile Infiniti needle guide - 14, 18GA with 14 x 147cm (5.5" x 58") telescopically-folded CIV-Flex cover (3D)	24
Transducer Covers & System Drapes		
610-1000	Sterile 10.2 x 147cm (4" x 58") CIV-Flex cover	24
610-542	Sterile 14 x 91.5cm (5.5" x 36") CIV-Flex cover (3D)	24
610-575	Sterile 14 x 147cm (5.5" x 58") CIV-Flex cover (3D)	24
610-1037	Sterile 20 x 28cm (7.9" x 11") polyethylene system drape	24
610-025	Sterile 76 x 76cm (30" x 30") polyethylene system drape	24

Now available for leading equipment manufacturers including: Esaote, GE Healthcare, Philips, SonoSite and ZONARE.

For bracket availability call 319.656.4447 or visit www.civco.com.

Safe. Efficient. Guiding Patient Care.

Introducing Infiniti™, a needle guide designed with simplicity in mind. The Infiniti needle guide offers a unique open channel with infinite angle capabilities assuring accurate in-plane positioning during procedures where access is difficult. The open channel design allows users an efficient needle release for viewing anatomy in both the short and long axis.

Accurate Placement

Consisting of a two-part system of a reusable bracket and a disposable snap-on needle guide, the Infiniti needle guide provides a safe, reliable and efficient tool for ultrasound-guided regional anesthesia. Infiniti holds the needle as it is advanced, providing a smooth insertion, while allowing you to see what you puncture.



Prevention
Precision
Positioning

- **Prevention:** Transducer and equipment covers protect against cross-contamination providing patient and staff safety.
- **Precision:** Infiniti needle guides deliver accurate in-plane positioning during puncture, providing confidence in hitting the target.
- **Positioning:** Proper placement of the transducer and patient for extended periods of time, improves ergonomics while allowing a single-person to perform the procedure.

Providing Guidance for Regional Anesthesia.



Placing an Order

Contact a CIVCO customer service specialist to place an order or request a product sample:

Toll-free within the U.S. and Canada: 800.445.6741

Toll-free Facsimile: 877.329.2482

Direct Dial: 319.656.4447

Facsimile: 319.656.4451

E-mail: info@civco.com

WWW.CIVCO.COM

