



Pancreatic Abscess Drainage and Ultrasound Overlay Using eTRAX™ Needle Tip Tracking

BACKGROUND

Dr. Steen Karstrup
Roskilde Sygehus
Copenhagen University Hospital
Department of Diagnostic Radiology
Copenhagen, Denmark

Case:
Drainage of Pancreas

Featured Product:
eTRAX Needle Tip Tracking System

CONSIDERATION FOR USE

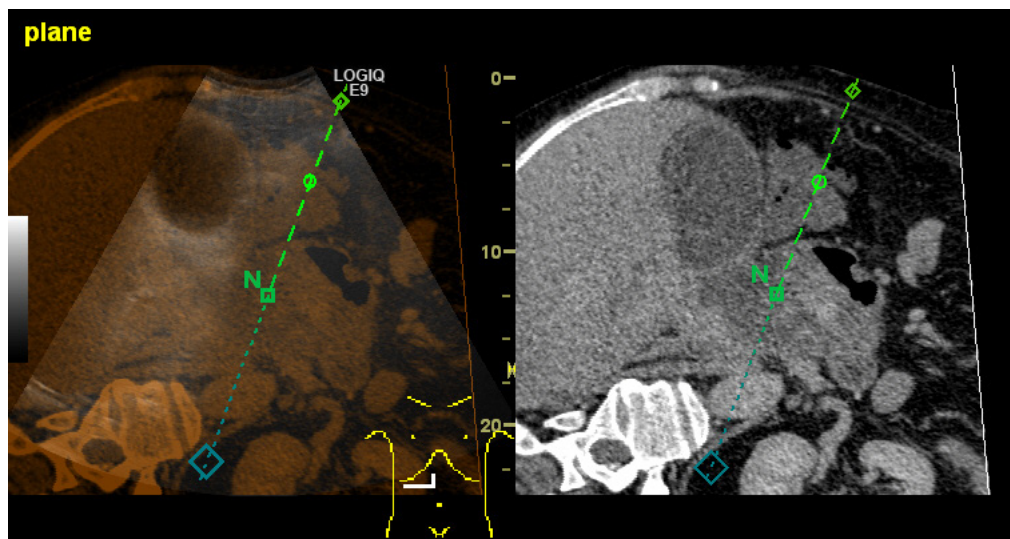
Patient presented with a difficult-to-see pancreatic abscess. Accurate access was aided by eTRAX Needle Tip Tracking's projection and pathway for advancement the needle. Use of an ultrasound overlay with CT revealed the required entry point.

REQUIRED EQUIPMENT FOR EXAMINATION

- GE Healthcare LOGIQ E9 with Volume Navigation
- CIVCO eTRAX Needle Tip Tracking System

APPROACH TO EXAMINATION

The electromagnetic eTRAX Needle Tip Tracking system allowed advance determination of the ideal angle of penetration through a difficult acoustic window in this drainage procedure of a pancreatic abscess. eTRAX offers continuous needle tip visualization in precise position as it enters the skin as well as its projected path for advancement to the target.



Shown above is an example of an overlay of the ultrasound image on CT, illustrating the required entry point through a non-acoustic window. The on-screen guideline reveals the direction of travel with the "N" representing the actual needle tip.

