



# eTRAX™ Biopsy of Recurring Prostatic Pelvic Tumor

## BACKGROUND

**Dr. Steen Karstrup**  
Roskilde Sygehus  
Copenhagen University Hospital  
Department of Diagnostic Radiology  
Copenhagen, Denmark

**Case:**  
Prostatic Pelvic Tumor Biopsy

**Featured Product:**  
eTRAX Needle Tip Tracking System

## CONSIDERATION FOR USE

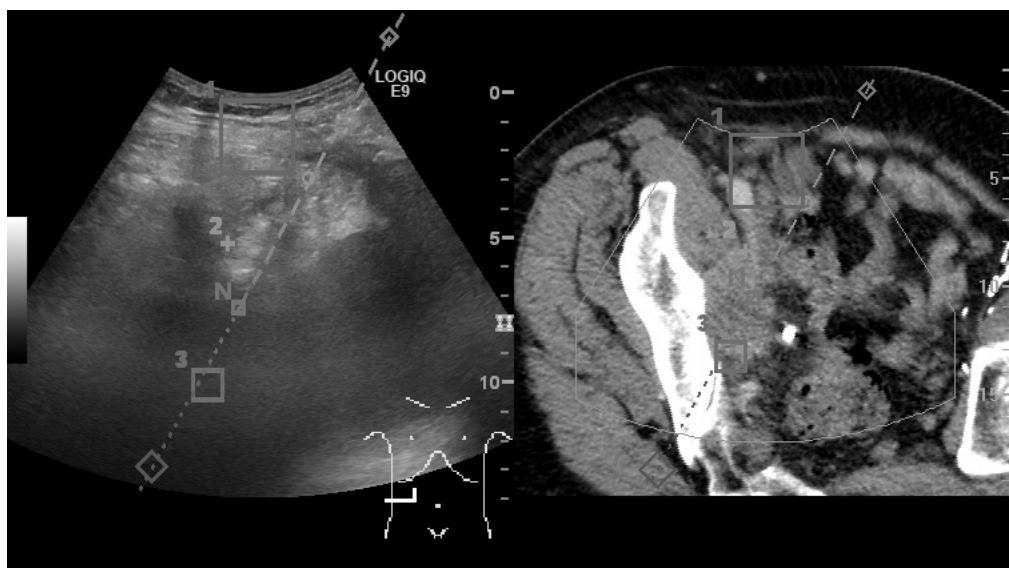
Patient presented with a recurring prostatic pelvic tumor. Utilizing Volume Navigation on the LOGIQ E9 allowed image fusion of CT and the ultrasound study. eTRAX Needle Tip Tracking software allowed accurate pre-puncture visualization of the path of the biopsy needle and ensured proper entry point selection.

## REQUIRED EQUIPMENT FOR EXAMINATION

- GE Healthcare LOGIQ E9 with Volume Navigation
- CIVCO eTRAX Needle Tip Tracking System

## APPROACH TO EXAMINATION

eTRAX Needle Tip Tracking allowed pre-puncture visualization of the needle angle and the most suitable entry point. The on-screen guideline reveals the direction of travel as noted by the graphical "N" representing the needle tip. The LOGIQ E9 with Volume Navigation offers GPS point markers as seen below. GPS markers 1, 2, and 3 indicate previous positions of the needle pathway. These markers are often helpful in designating needle position for procedures such as radiofrequency ablations. The markers automatically show the corresponding location in CT.



eTRAX Needle Tip Tracking allows continuous visualization of the needle tip. Pre-procedure needle path visualization is also possible, aiding in the selection of the most accurate entry point.

