



eTRAX™ Needle Tip Tracking Enables Biopsy of Difficult-to-See Pancreatic Lesion

BACKGROUND

Dr. Steen Karstrup
Roskilde Sygehus
Copenhagen University Hospital
Department of Diagnostic Radiology
Copenhagen, Denmark

Case:
Corpus Pancreatitis Truncus Celiacus

Featured Product:
eTRAX Needle Tip Tracking System

CONSIDERATION FOR USE

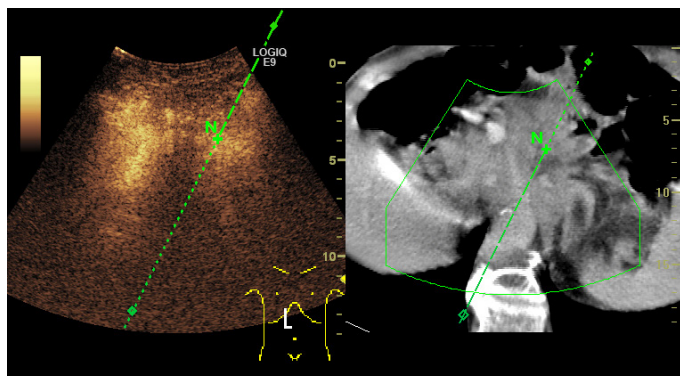
Patient presented with pancreatitis. Using Volume Navigation on the LOGIQ E9, (GE Healthcare), image fusion using CT and ultrasound data sets was possible. eTRAX Needle Tip Tracking (CIVCO Medical Solutions) was useful for continuous visualization of the needle tip.

REQUIRED EQUIPMENT FOR EXAMINATION

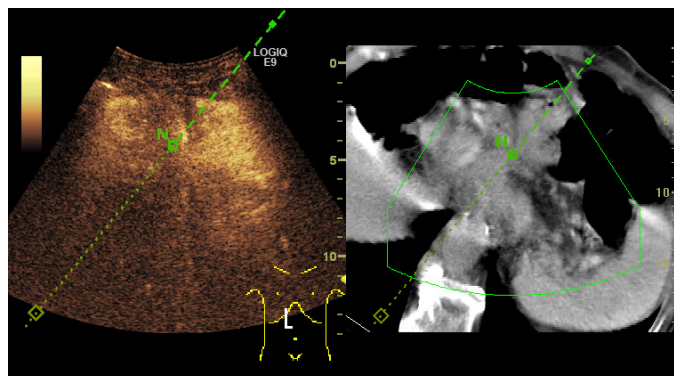
- GE Healthcare LOGIQ E9 with Volume Navigation
- CIVCO eTRAX Needle Tip Tracking System

APPROACH TO EXAMINATION

eTRAX Needle Tip Tracking allows an on-screen projection of the future needle path and reveals the direction of travel with “N” representing the actual needle tip. Electromagnetic needle tip tracking allowed continuous visualization of the needle tip as it was advanced toward the targeted tumor in this case of pancreatitis.



Volume navigation enabled fusion of CT and ultrasound slices in the region of the pancreas.



Aided by the on-screen guidelines of eTRAX Needle Tip Tracking, the projected needle path allowed an accurate puncture of the pancreas.

