



Ultrasound-Guided Biopsy of Deep Liver Lesion using Ultra-Pro II™ Needle Guide

BACKGROUND

Dr. Corinne Deurdulian
Department of Radiology
Keck Medical Center of USC
Los Angeles, CA USA

Case:
Liver Biopsy

Featured Product:
Ultra-Pro II Needle Guide

CONSIDERATION FOR USE

A 64 year-old-male with a history of diabetes, hypertension and end-stage renal disease (ESRD) was admitted with shortness of breath and increasing abdominal girth. A right upper quadrant ultrasound was performed that demonstrated a liver mass. Follow-up ultrasound demonstrated the mass was increasing in size. The patient also had a new diagnosis of cirrhosis. A biopsy of the liver mass was ordered.

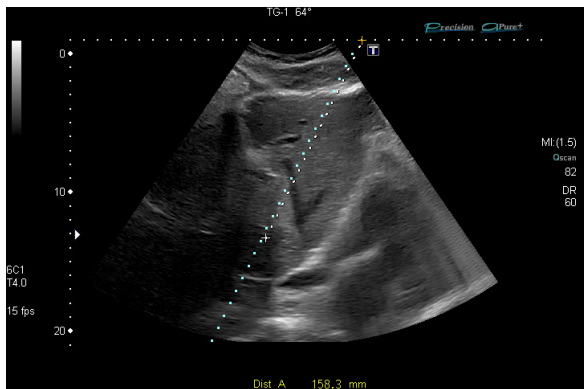
REQUIRED EQUIPMENT FOR EXAMINATION

- Toshiba Aplio™ 500 ultrasound system
- CIVCO Ultra-Pro II Needle Guide

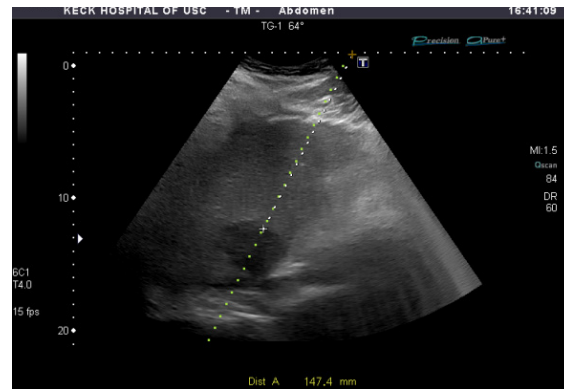
APPROACH TO EXAMINATION

The initial image demonstrates the liver lesion 15.8cm deep to the skin line with a hepatic vein in the path of the needle trajectory. The point of entry was changed and the lesion depth decreased to 14.7cm with no large vessels in the pathway. The needle guide (Ultra-Pro II, CIVCO Medical Solutions) helped reposition the trajectory and the biopsy was successful.

Diagnosis: Moderately differentiated adenocarcinoma with pancreatic / pancreaticobiliary etiology.



Initial scanning demonstrates a deep liver lesion, at 15.8cm from the skin line with a hepatic vein in the pathway of the needle trajectory. Using the biopsy software guidelines aides in pre-planning of the biopsy point of entry.



Following the initial pre-planning scan, the point of entry was changed resulting in a decreased depth of 14.7cm with no large vessels in the pathway. Selection of a 64 degree angle needle guide was determined ideal for successful access of the lesion.

