



# Difficult Ultrasound-Guided Liver Biopsy Aided by Use of Needle Guidance

## BACKGROUND

Dr. Carla Serra  
Unit of Internal Medicine for  
Multi-Organ Failure Treatment  
Department of Surgical  
Science and Transplant  
St. Orsola Malpighi Hospital,  
University of Bologna  
Bologna, Italy

Featured Product:  
Ultra-Pro II™ Needle Guide

## CONSIDERATION FOR USE

A 62 year-old woman affected by systemic lupus erythematosus since she was 37, and taking corticosteroids, underwent abdominal ultrasound for a mild elevation of transaminases. A 30mm hypoechoic and irregular mass was detected in segment II-III and a biopsy of the mass was performed.

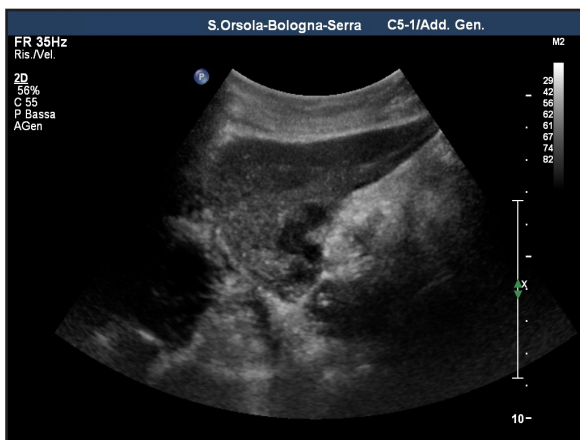
## REQUIRED EQUIPMENT FOR EXAMINATION

- Philips iU22 X-MATRIX ultrasound system, Bothell, WA
- CIVCO Ultra-Pro II Needle Guide, Kalona, IA

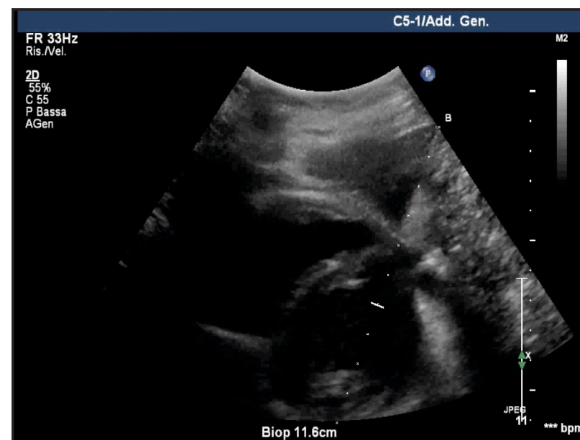
## APPROACH TO EXAMINATION

The lesion was deeply located along the posterior-superior margin of the liver, near the cardiac apex area. Transmitted heart movements limited a safe needle approach. The needle guide (Ultra-Pro II, CIVCO Medical Solutions) helped select the best needle trajectory despite transmitted heart movements. The biopsy was successful and safely performed.

Diagnosis: Lymphocytic and granulocytic infiltrate associated with diffuse coagulative necrosis.



Ultrasound detected a deeply located hypoechoic lesion near the cardiac apex in segment II-III.



Use of the needle guide (Ultra-Pro II) aided selection of the best needle trajectory despite heart movements and allowed a safe and successful biopsy.

