



Transhepatic Puncture with VirtuTRAX™ Virtual Tip Tracking

BACKGROUND

Dr. Steen Karstrup
Roskilde Sygehus
Copenhagen University Hospital
Department of Diagnostic Radiology
Copenhagen, Denmark

Case:
Transhepatic Puncture

Featured Product:
Virtu-TRAX Virtual Tip Tracking

CONSIDERATION FOR USE

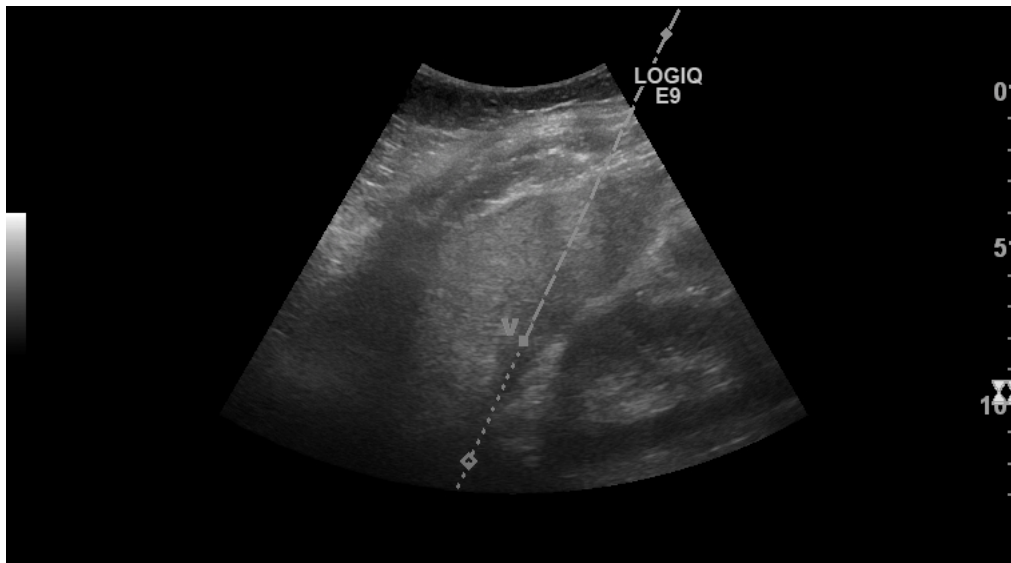
Patient presented with an abscess. Virtual tip tracking was useful for accurate placement and visualization of the instrument tip throughout the procedure.

REQUIRED EQUIPMENT FOR EXAMINATION

- GE Healthcare LOGIQ E9 with Volume Navigation
- CIVCO VirtuTRAX Virtual Tip Tracking System

APPROACH TO EXAMINATION

Using electromagnetic tracking technology, the instrument tip was tracked throughout the procedure, allowing precise placement. On-screen system guidelines revealed the direction of travel with a "V" representing the instrument tip with continuous visualization as the instrument was advanced to the abscess.



Virtual Needle Tip Tracking allowed pre-procedure determination of the ideal angle of penetration through different anatomic quadrants. VirtuTRAX allows tracking of any rigid instrument such as a needle or radiofrequency ablation probe.

